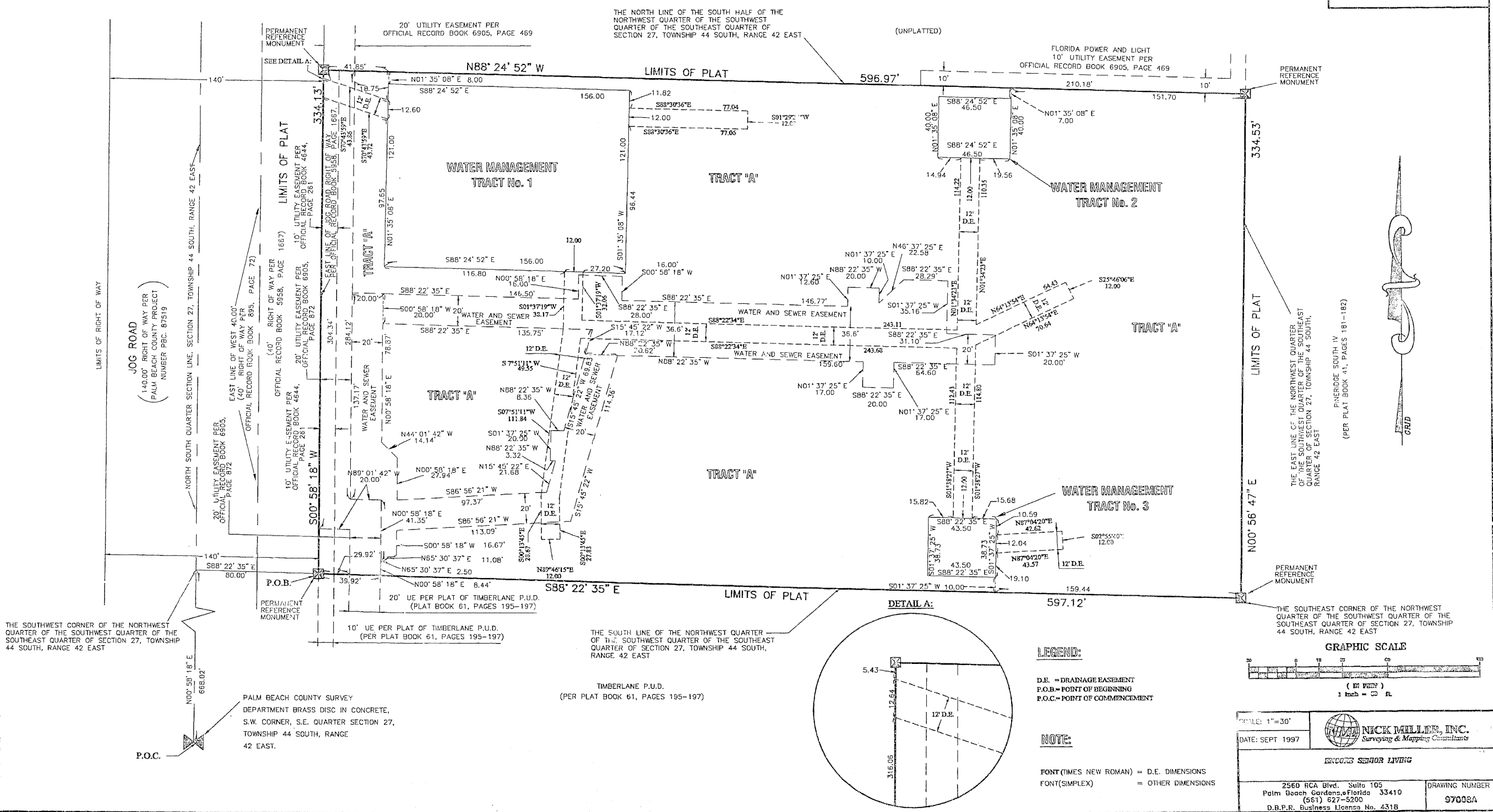
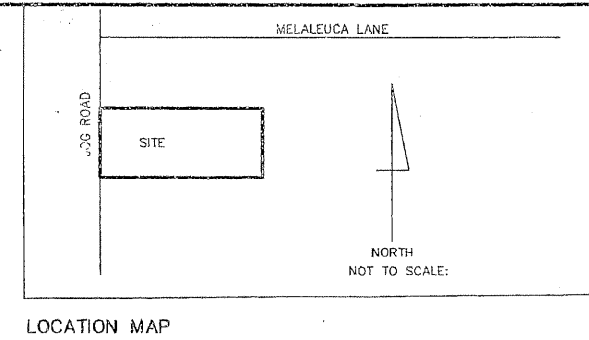


# ENCORE SENIOR LIVING GREENACRES, FLORIDA

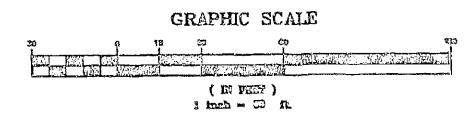
LYING IN SECTION 27, TOWNSHIP 44 SOUTH, RANGE 42 EAST  
CITY OF GREENACRES, PALM BEACH COUNTY, FLORIDA  
SHEET 2 OF 2  
SEPTEMBER 1997

34



**LEGEND:**  
 D.E. = DRAINAGE EASEMENT  
 P.O.B. = POINT OF BEGINNING  
 P.O.C. = POINT OF COMMENCEMENT

**NOTE:**  
 FONT (TIMES NEW ROMAN) = D.E. DIMENSIONS  
 FONT (SIMPLEX) = OTHER DIMENSIONS



SCALE: 1"=30'	 <b>NICK MILLER, INC.</b> <i>Surveying &amp; Mapping Consultants</i>	ENCORE SENIOR LIVING	DRAWING NUMBER
DATE: SEPT 1997		2560 RCA Blvd., Suite 105 Palm Beach Gardens, Florida 33410 (561) 627-5200 D.B.P.R. Business License No. 4318	97008A